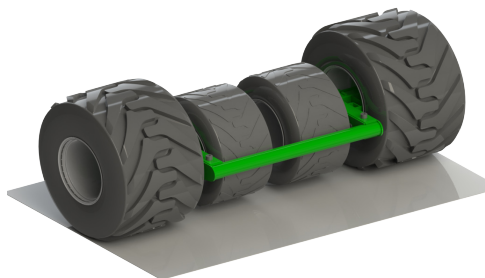
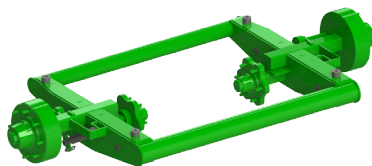


## Cashels 4-Wheel Chassis (to suit McHale Fusion 2&3)



4-Wheel Chassis retrofits to Fusion 2 or 3



8-stud outer braked axle, 6-stud inner (FAD)

The **Cashels 4-Wheel Chassis** is designed to be retrofitted to the McHale Fusion Baler/ Wrapper unit. The design is compatible with both the Fusion 2 and the newer Fusion 3 models. The main feature of the chassis is that it reduces the overall ground pressure by 40%+ when operating in wet conditions. On softer ground, the chassis also increases stability while minimising ground damage.

The two centre wheels have 20mm ground clearance when the Fusion is travelling on road and when operating in normal ground conditions. The centre wheels only engage with the ground to perform their design function of reducing the ground pressure of the Fusion in wet, soft ground conditions. Standard units are supplied with hydraulic brakes on outer FAD stub axles. Models with air brakes are also available.

### Key Features:

- Chassis fabricated from fine grain steel throughout
- 8-stud outer braked stub axles (FAD)
- 6-stud inner unbraked stub axles (FAD)
- High quality paint finish to match Fusion
- Stacking brackets for transport & shipping
- Centre wheels: TIANLI Flotation Radial 500/50R17



4-Wheel Chassis fitted to McHale Fusion 3

Length (mm)	Width (mm)	Height (mm)	Load Capacity	Net Weight (kg)
1165	2450	410	7000kg	355